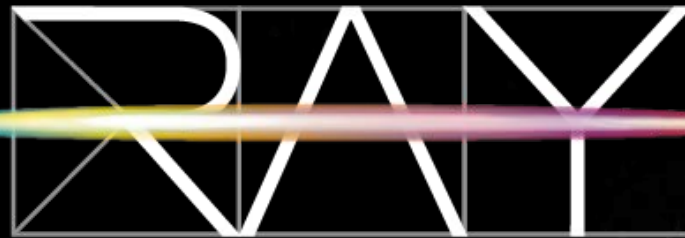


T H E



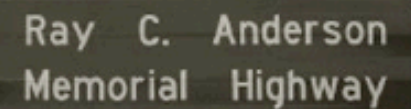
Let's drive the future.



## Ray C. Anderson (1934-2011)

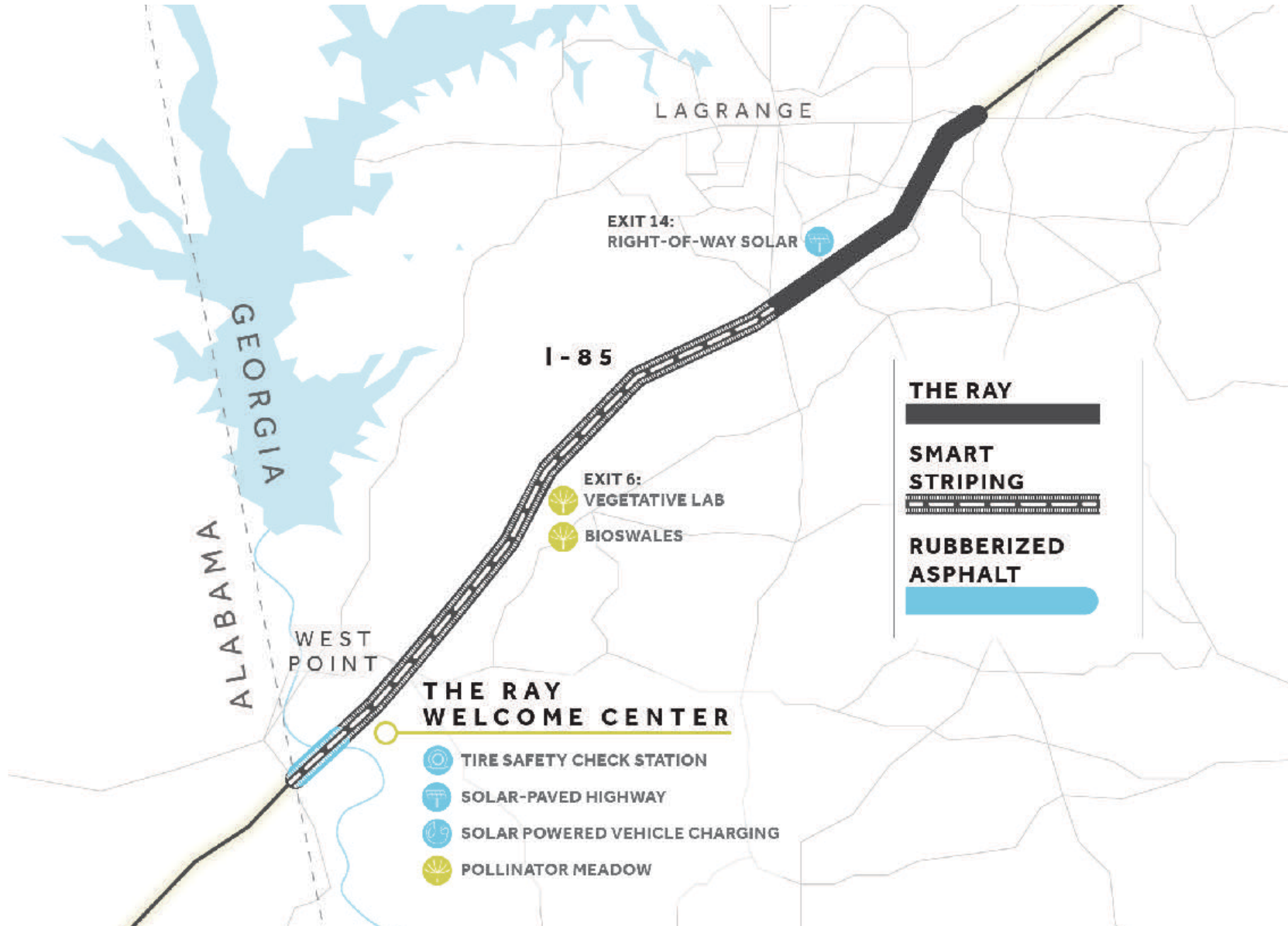
Interface, Inc.

- “America’s Green Industrialist”
- Global pioneer of corporate sustainability
- Circular economy now mainstream



Ray C. Anderson  
Memorial Highway

A photograph of a highway sign for Ray C. Anderson Memorial Highway. The sign is a dark rectangular sign with white text, mounted on two metal poles. In the background, a multi-lane highway stretches into the distance under a cloudy sky. There are some trees and a few vehicles visible on the road.









## State of Solar in Georgia

- GA ranks 9th - cumulative solar capacity (2020)  
2,758 MW —> 322,691 homes
- 2019 Georgia Power IRP = 2 GW utility-scale PV
- More than 50 GA counties —> 5k solar jobs
- \$33.5/MWh cost; \$85.6/MWh LCOE





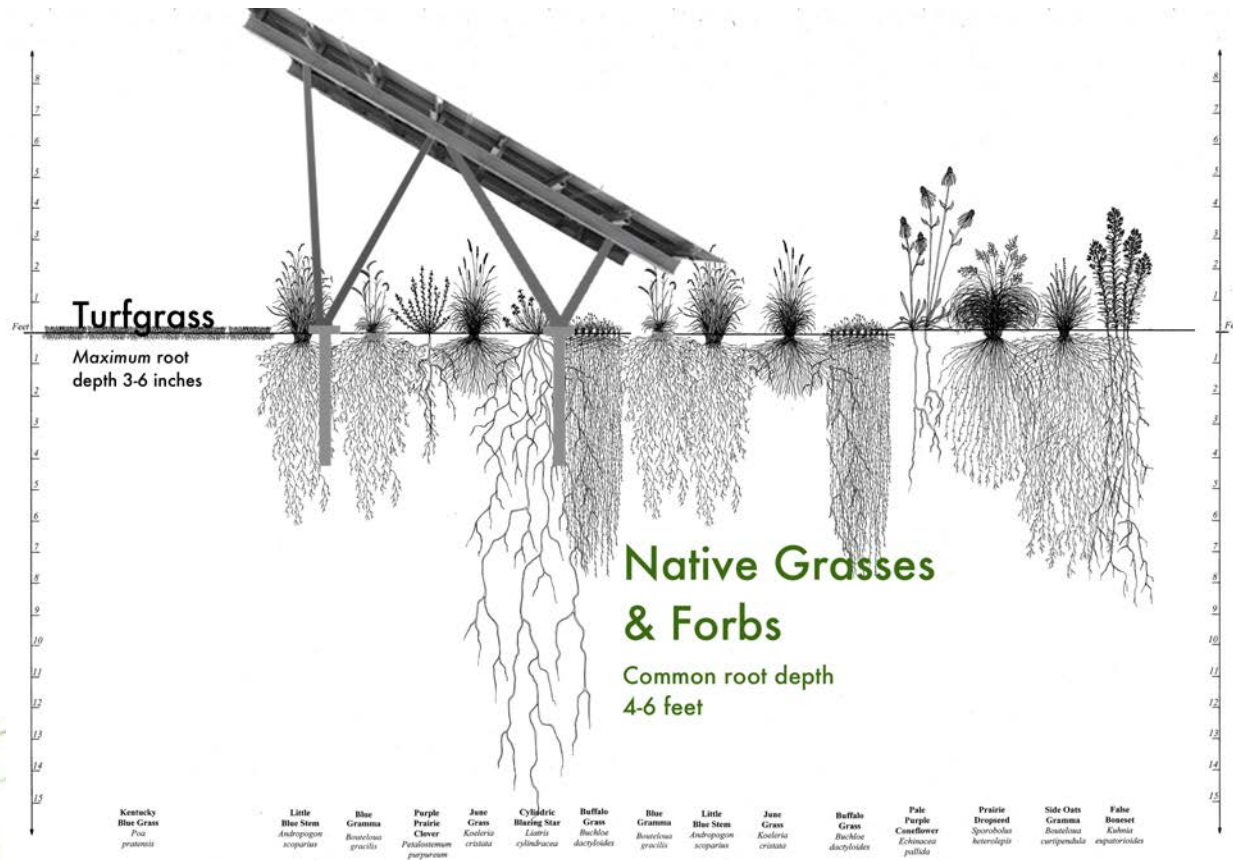


## Right-of-Way Solar

- 1 MW DC on 4 acres – 2,600 solar panels
- Online 2/2020 → Georgia Power Southern Company project, power to grid
- 1<sup>st</sup> pollinator-friendly ROW solar in U.S.
- 2021 Right-of-way solar mapping tool:
  - The Ray & ESRI



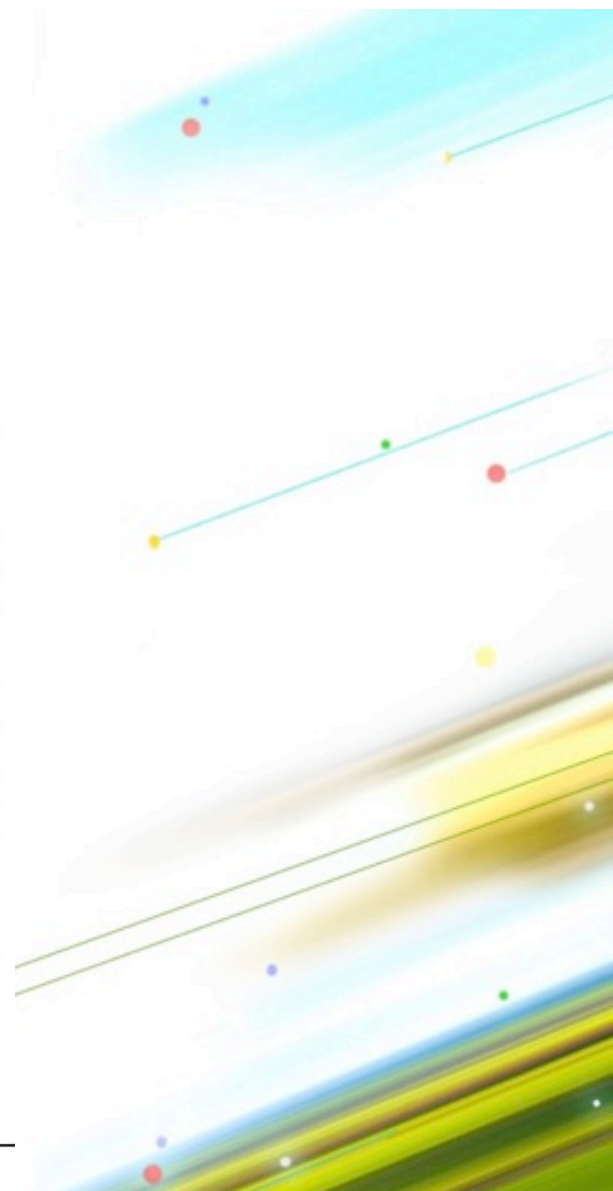
# Pollinator-Friendly Solar



**Solar Site Management for Soil, Storm Water, and Pollinator Benefits**

**Rob Davis, Fresh Energy**

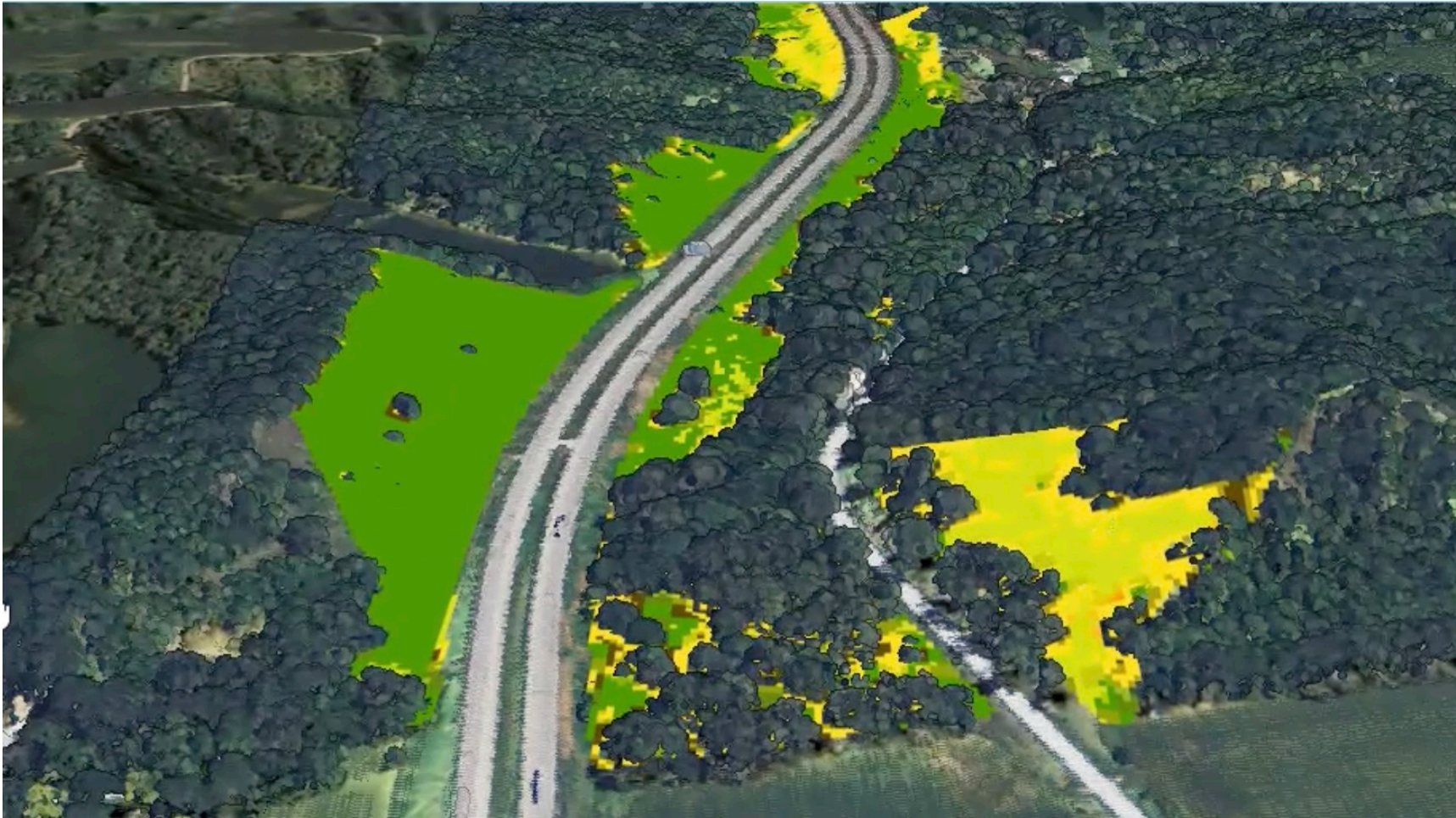
Adapted with permission from Bill Naylor, Living Habitats © 1999



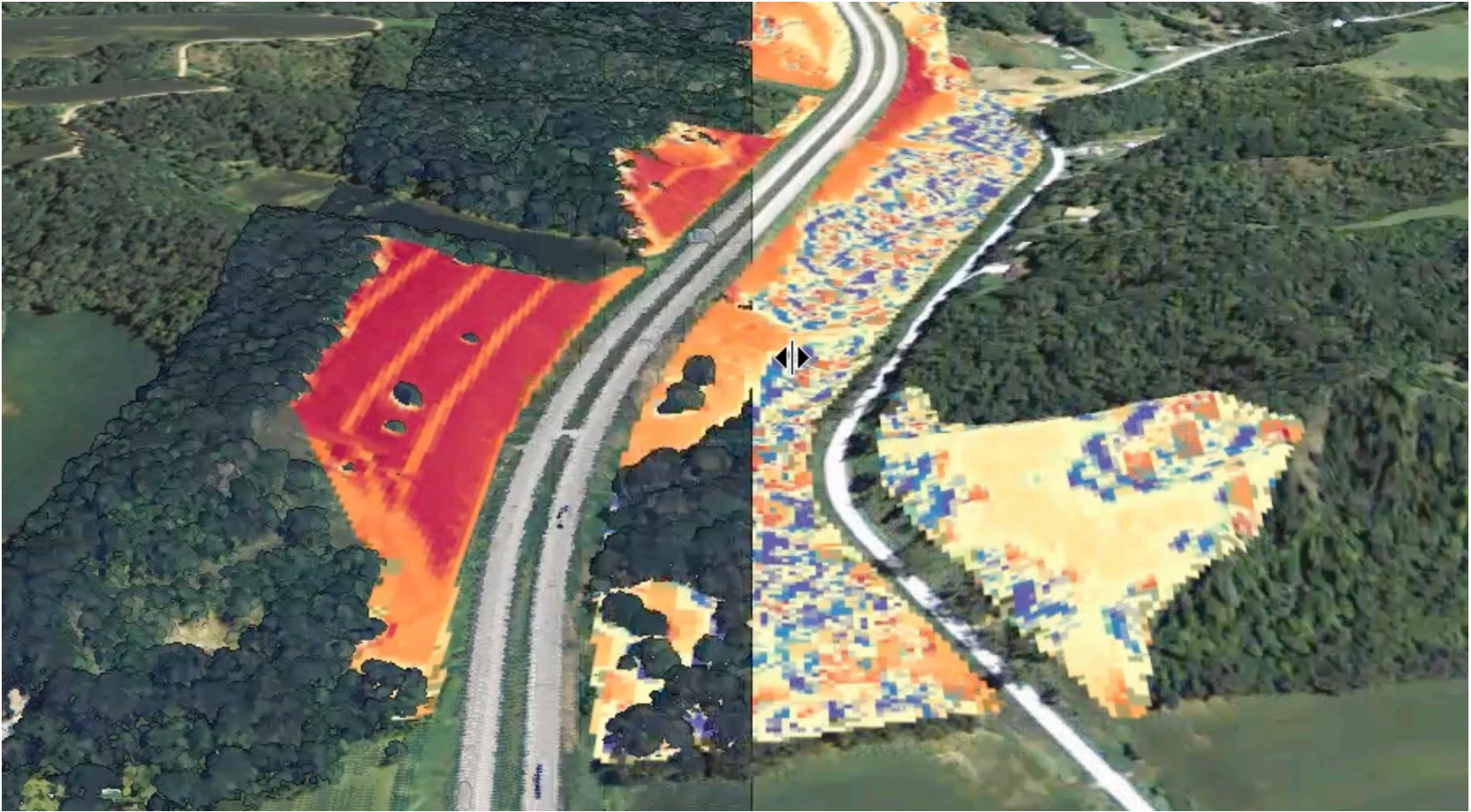




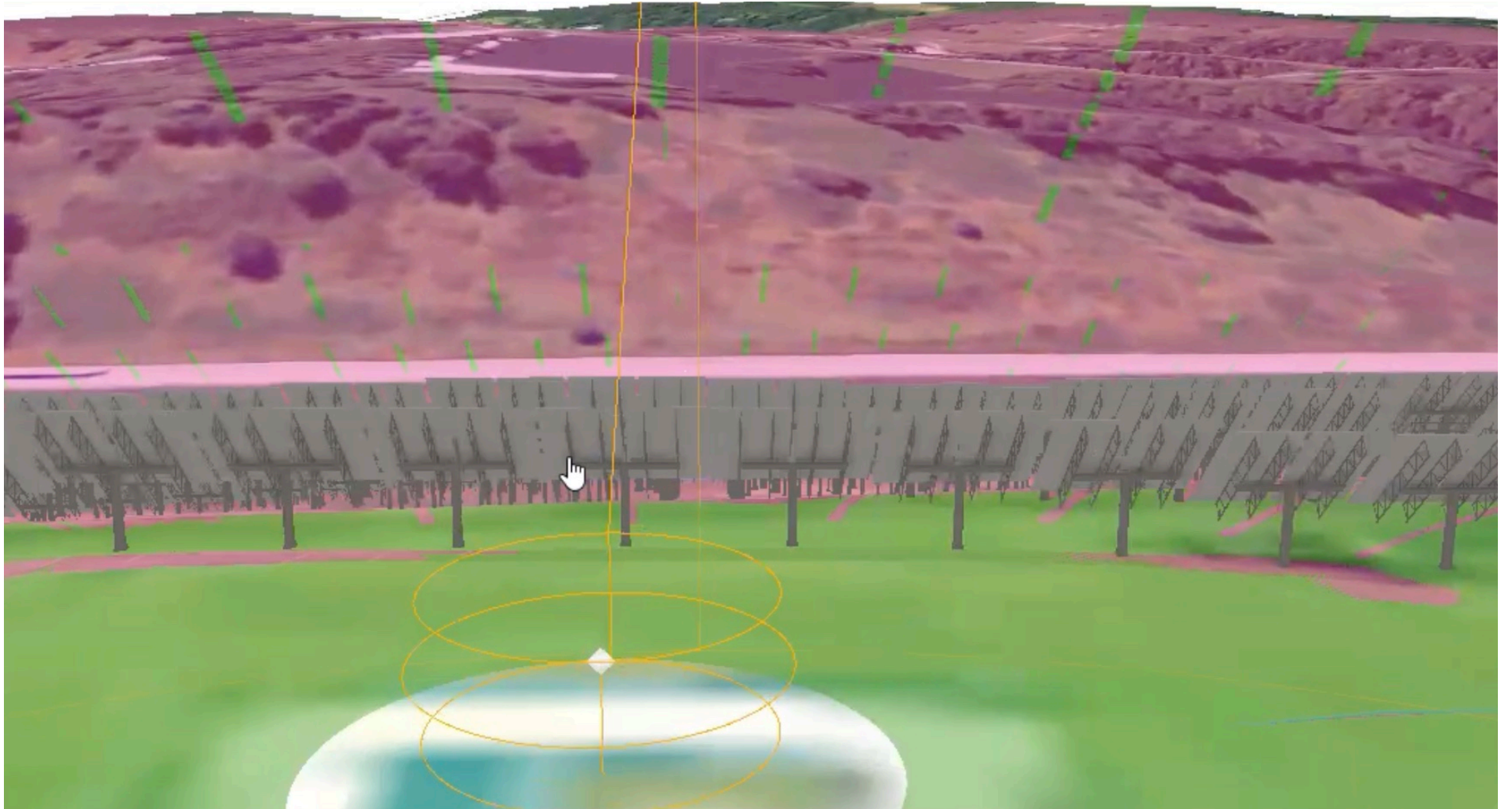


















# EV Charging

- First public PV4EV in the Southeast U.S.
- 175kW —> 350kW
- Interstate EV charging gap – connects Atlanta & Montgomery



Project Partners



Technology Partners



Research Partners




Contact:

Laura Rogers, Deputy Director  
laura@theray.org

Facebook / Twitter / Insta / LIIn:  
@TheRayHighway  
#RideTheRay  
#DriveTheFuture